

# Mapping Enabled Winlink Forms

# Phil Sherrod – W4PHS / NCS398



Developed by  
The Winlink Development Team

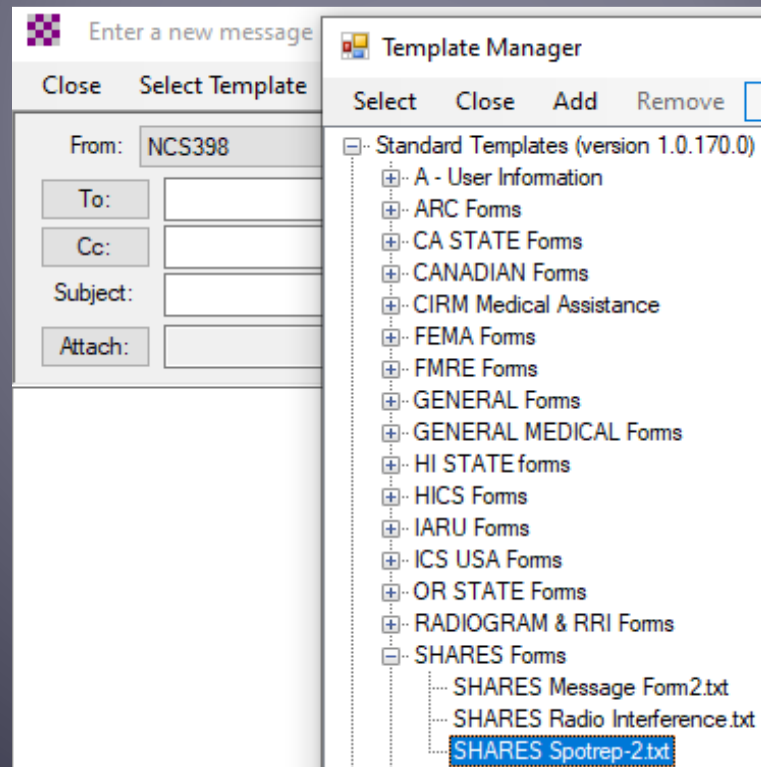


## Situation Reports and Other Mapping Enabled Forms

- Timely situation reports, weather reports, and other status reports are essential for incident management.
- Often reports come from no-Internet locations.
- Winlink Express offers several forms that provide position reports for mapping and data for CSV spreadsheet files.
- When received at the incident management center, Winlink Express can display a map showing status markers for reports, and it can generate a .csv spreadsheet data file with information from reports.

# Sending a SPOTREP-2 Report

- Start composing a new message
- Click “Select Template”
- Select SHARES Spotrep-2.txt from the SHARES group.



# SPOTREP-2 Form

PRECEDENCE: (R) - Routine ▼

DATE/TIME: 2021-11-12 17:32:49Z

TASK #

FROM: NCS398

TO:

INFO (CC):

*Call signs or E-mails entered into the TO or INFO fields above, can be multiples separated by a semicolon ;*

1. City/State/Territory:

2. Latitude and longitude: LAT 36.0077 LON -86.7667 MGRS Ex:11SNR0184195204

*LAT and LON are required to map this SpotRep. If entering manually use Decimal Degree format or from an attached GPS device.*

3. LandLines functioning? ☐ YES ☐ NO ☒ Unknown - N/A

Comments

4. Cell Phones functioning? ☐ YES ☐ NO ☒ Unknown - N/A

Comments

5. AM/FM Broadcast Stations functioning? ☐ YES ☐ NO ☒ Unknown - N/A

Comments

6. TV Stations functioning? ☐ YES ☐ NO ☒ Unknown - N/A

Comments

7. Public Water Works functioning? ☐ YES ☐ NO ☒ Unknown - N/A

Comments

8. Commercial Power functioning? ☐ YES ☐ NO ☒ Unknown - N/A

Comments

9. Internet functioning? ☐ YES ☐ NO ☒ Unknown - N/A

Comments

10. Additional Comments *Brief summary of current situation - expected outage times, major observations, etc.*

11. POC

Amateur Radio Safety Foundation, Inc.

# How Default Position is Determined

- When a form is opened, the default position is determined as follows:
  1. If a GPS unit is present, use GPS latitude/longitude.
  2. If no GPS is present and "Use Position Report Location" is checked, use Position Report lat/lon.
  3. If no GPS is present and "Use Position Report Location" is not checked, use center of grid square latitude/longitude.


You can manually enter latitude and longitude to override the default position.

# Submitting the Report

- Enter one or more recipient addresses in the TO field. Separate recipients by comma or semicolon. You can specify both Winlink callsigns and e-mail addresses, but only Winlink Express can process reports.
- Enter latitude and longitude. If you have a GPS dongle, it will be entered automatically. Otherwise, it will default to the grid square position.
- Click Yes/No/Unknown buttons for each resource, and add any comments.
- Click Submit at the bottom of the form.
- This will generate a message ready to be posted to the Outbox.



# SPOTREP-2 Message Ready to Send

 Enter a new message

Close Select Template Sitrep SitRep Attachments Post to Outbox Spell Check Save in Drafts

From: NCS398

Send as: Winlink Message

☐ Request message receipt

Set Defaults

To: NNA4TN

Cc:

Subject: //WL2K R/ SPOTREP 2021-11-12 17:40:53Z

Attach: RMS\_Express\_Form\_Shares\_Spotrep-2\_Viewer.xml;

PRECEDENCE: R  
DATE/TIME Group: 2021-11-12 17:40:53Z  
TASK# 1  
FROM: NCS398  
TO: NNA4TN  
INFO (CC):  
BT  
UNCLASS

SUBJ SPOTREP 2021-11-12 17:40:53Z

1. City/State/Territory: Brentwood, TN
2. Latitude :36.0077 Longitude:-86.7667 MGRS:
3. LandLines functioning? [ NO ]
4. Cell Phones functioning? [ YES ]
5. AM/FM Broadcast Stations functioning? [ -- ]
6. TV Stations functioning? [ -- ]
7. Public Water Works functioning? [ YES ]
8. Commercial Power functioning? [ NO ]
9. Internet functioning? [ NO ]

# Reception of Reports

- When a message with an attached form data report is received by someone running Winlink Express, the information from the report is extracted from the message automatically and stored in a database.
- Messages do not need to be selected or displayed for the data to be added to the database; it's done on download.
- Click “Message” on the main menu bar followed by “Generate maps and csv files for forms.” There also is a “world” toolbar icon you can click to get to this screen.





# Showing Maps and Creating csv Files

The screenshot shows a software window titled "Maps and CSV Files for Forms". It contains several interactive elements and callouts:

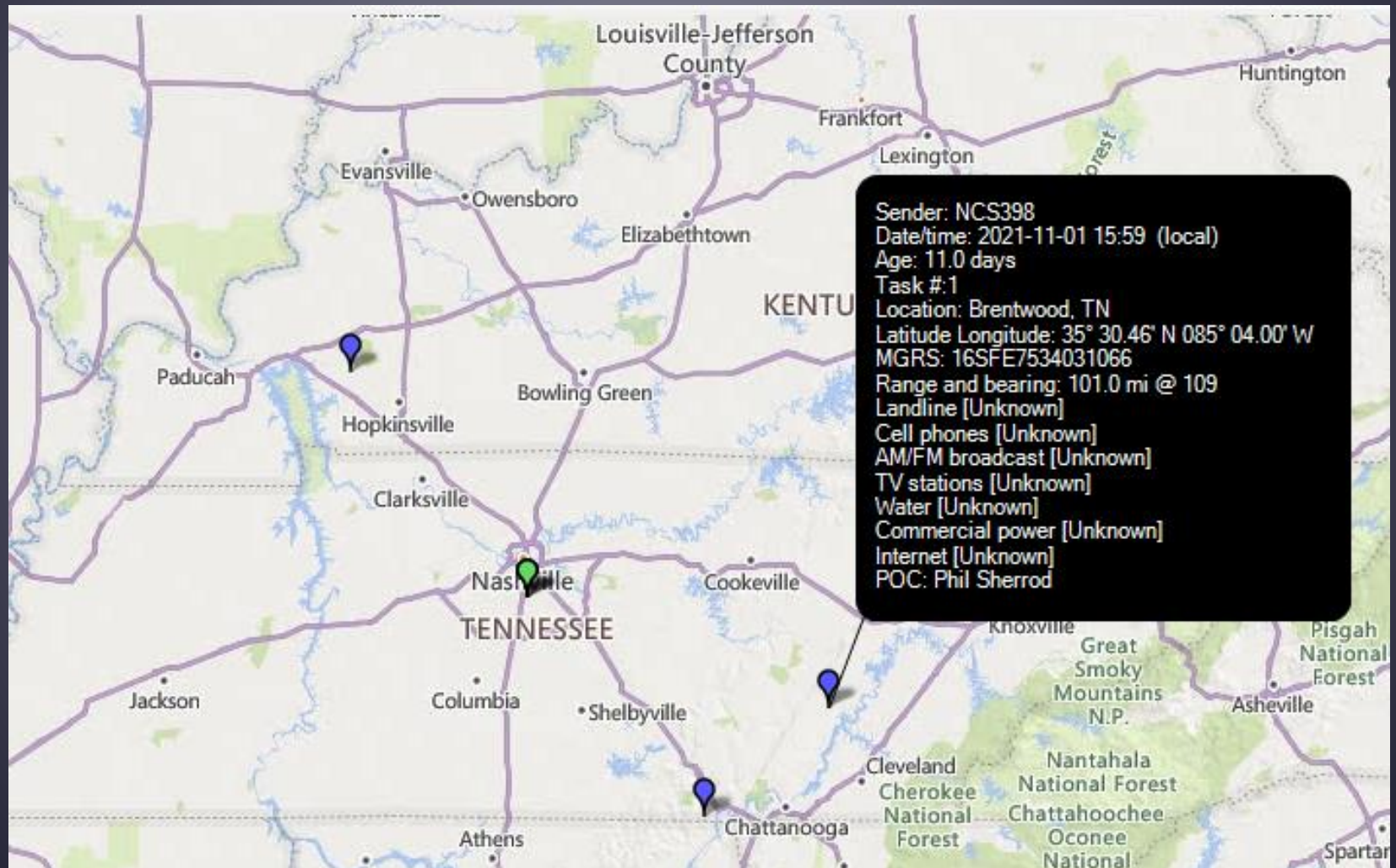
- Select form:** A dropdown menu currently showing "SPOTREP-2".
- Type of map:** A dropdown menu currently showing "Bing".
- Expiration days:** A text input field containing the number "10".
- Form Report Management:** A section containing:
  - Delete reports older than this many days:** A text input field containing "30".
  - Delete old reports for this form:** A button.
  - Delete all reports for this form:** A button.
- Export and Import Form Data:** A section containing:
  - Export form data:** A button.
  - Import form data:** A button.
- Buttons at the bottom:** "Display Map", "Generate CSV File", and "Close".

Callouts (blue boxes with arrows) point to the following features:

- Select form
- Type of map
- Expiration days
- Expire old reports
- Delete all reports
- Display map of reports
- Export and import reports
- Make csv file

# SPOTREP-2 Map

- Click a marker for information about the report.



# Click “Set Filters” to Filter Map Markers

Select only recent reports

Map Filters for SPOTREP-2

Display reports no more than this many hours old:

Filter Map by Field Values

Form reports are displayed if any of the field values match the selection value. If the Mark Red box is checked, markers will be red if the specified value matches.

☒ Enable map filtering

Form field	Selection Value	Mark Red
AM/FM Broadcast Stations functioning?	(Ignore)	<input type="checkbox"/>
Cell Phones functioning?	(Ignore)	<input type="checkbox"/>
Commercial Power functioning?	NO	<input checked="" type="checkbox"/>
Internet functioning?	NO	<input type="checkbox"/>
LandLines functioning?	(Ignore)	<input type="checkbox"/>
Precedence	(Ignore)	<input type="checkbox"/>
Power Line Works functioning?	(Ignore)	<input type="checkbox"/>
TV Stations functioning?	(Ignore)	<input type="checkbox"/>

Clear all selections

Select which reports are to be displayed

Mark selected outages in red

# You Can Select Different Types of Maps

Maps and CSV Files for Forms

Select form: SPOTREP-2

Number of stored reports: 10

Map provider: Bing

- ArcGIC Imagry
- ArcGIS Physical
- ArcGIS Shaded Relief
- ArcGIS Streets
- ArcGIS Terrain
- ArcGIS Topo
- Bing
- Bing Hybrid
- Bing Satellite
- Google
- Google Hybrid
- Google Satellite
- Google Terrain
- Open Cycle
- Open Cycle Transport
- Open Street Map
- Wiki Map
- (Simple map for no Internet)

Form Report

Delete rep

Delete

Delete

Display

Simple map if  
no Internet  
and no cached  
map

# Spreadsheet Report Data

- Export reports to a csv file and import them into a spreadsheet program.
- You can generate custom reports or use report positions for your own mapping.

The screenshot shows the Microsoft Excel interface with the file 'SitrepPhil.csv' open. The ribbon is set to 'Home'. The spreadsheet data is as follows:

	A	B	C	D	E	F	G	H	I	J	K	L	M	N	O
	Message ID	Task #	From	Date-Time	Location	Latitude	Longitude	MGRS	Range (mi)	Bearing	Landlines	Landlines	Cell phone	Cell phone	AM/FM Br
1	Message ID	Task #	From	Date-Time	Location	Latitude	Longitude	MGRS	Range (mi)	Bearing	Landlines	Landlines	Cell phone	Cell phone	AM/FM Br
2	EZAIFUSN8PB0	1	NCS398	10/31/2021 13:19	Brentwoo	35.0077	-85.7666	16SFD1254274591	89	141	Unknown		Unknown		Unknown
3	6VPD418T2JPN	1	NCS398	10/31/2021 21:25	Brentwoo	37.0077	-87.7666	16SDF3179796001	88.6	322	Unknown		Unknown		Unknown
4	G8Y345ZJ9OVV	1	NCS398	11/1/2021 15:59	Brentwoo	35.5077	-85.0666	16SFE7534031066	101.3	109	Unknown		Unknown		Unknown
5	9LXUEX9CQTBZ	1	NCS398	11/1/2021 19:15	Brentwoo	36.0078	-86.7667	16SDF3178896012	0	328	Unknown		Unknown		Unknown
6	Y10NOKOC9VJF	1	NCS398	11/1/2021 19:23	Brentwoo	36.0077	-86.7667	16SDF3178896012	0	283	Unknown		Unknown		Unknown
7															



# Recommended GPS Dongle

## GlobalSat BU-353-S4 USB GPS Receiver (Black) (Improved-New)

Brand: GlobalSat

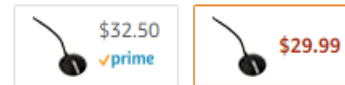
★★★★★ 1,198 ratings | 302 answered questions

Price: **\$29.99**

Get a **\$10 bonus** when you reload **\$100 or more** to your gift card balance (Restrictions apply).

Eligible for **amazon smile** donation.

Color: **IMPROVED-NEW**



Brand	GlobalSat
Color	IMPROVED-NEW
Connectivity Technology	USB
Map Type	Satellite

### About this item

- Built-In GPS Patch Antenna
- Built-In Roof Mount Magnet
- 48-Channel All-In-View Tracking
- SiRF Star IV GPS Chipset
- WAAS/ EGNOS Support

› [See more product details](#)

image to open expanded view



# Setting up GPS in Winlink Express

- Open Settings - GPS/Position Reports screen

GPS / Position Report

GPS Serial Port

GPS Serial Port:  GPS Baud Rate:

GPS Status

\$GPRMC,14.0535,0.00,A,36.00,46.74,N,086.46,00.26,W,0.00,355,0.3,050122,A\*72

Last fix at 2022-01-05 14:05:35 UTC

GPS Latitude:  GPS Longitude:

GPS Speed:  Knots GPS Course:  True

☒ Automatically update grid square from GPS position:

Position Report

Your last position report was posted at 2020-10-11 16:34:03 UTC

Report Date/Time:  UTC

(Latitude/longitude may be entered as decimal degrees, DD-MM.MMx, or DD-MM-SSx)

Latitude:  Longitude:

Speed:  Knots Course:  True

MGRS coordinates:

Comment - 148 Characters Maximum:

☐ If no GPS position, use position report location as my current location

Select COM port  
of GPS unit

GPS info streams  
here

Your position shown  
here

Check to use  
position report  
location as default  
position

Standard speed  
is 4800 baud

Check option to  
update grid  
square from GPS  
position



- Winlink team:
  - Lor Kutchins, W3QA (President, ARSFi)
  - Phil Sherrod, W4PHS (Developer and BoD)
  - Steve Waterman, K4CJX (Administrator and BoD)
- Winlink web site: [www.winlink.org](http://www.winlink.org)
- White papers about Winlink: [www.qrz.com/db/W4PHS](http://www.qrz.com/db/W4PHS)
- Support group:  
<https://groups.google.com/forum/#!forum/winlink-programs-group>